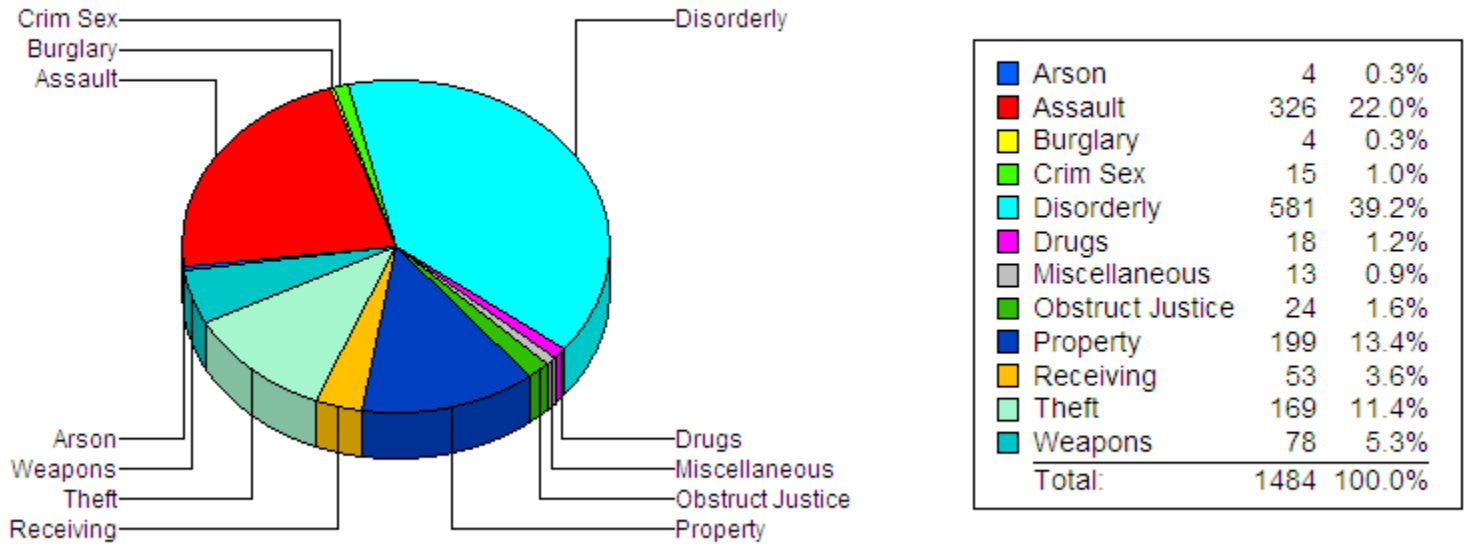


# Characteristics of School Crime

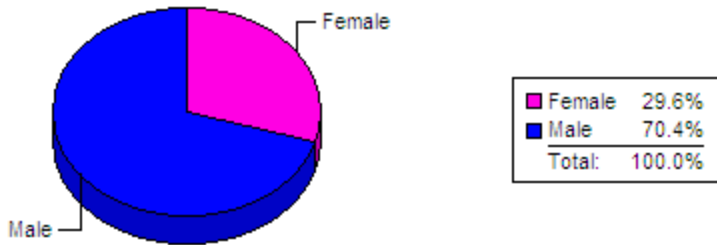
2008 - 2009 School Year

Cases received between 8/1/2008 and 7/31/2009

## Offense Type



## Gender



	Female	Male	Total
Arson	2	2	4
Assault	95	231	326
Burglary		4	4
Crim Sex	5	10	15
Disorderly	211	370	581
Drugs	6	12	18
Miscellaneous	4	9	13
Obstruct Justice	8	16	24
Property	38	161	199
Receiving	13	40	53
Theft	43	126	169
Weapons	15	63	78
<b>Total</b>	<b>440</b>	<b>1,044</b>	<b>1,484</b>