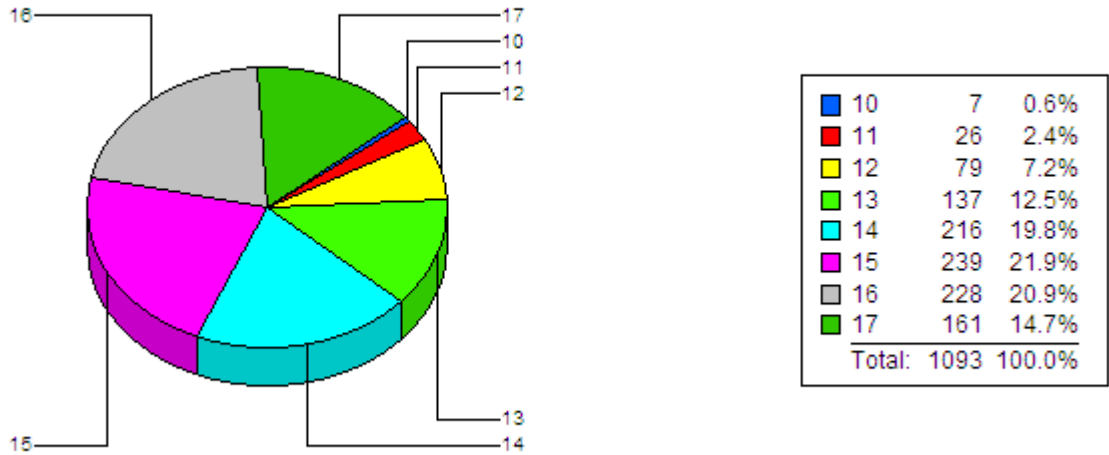


Characteristics of School Crime

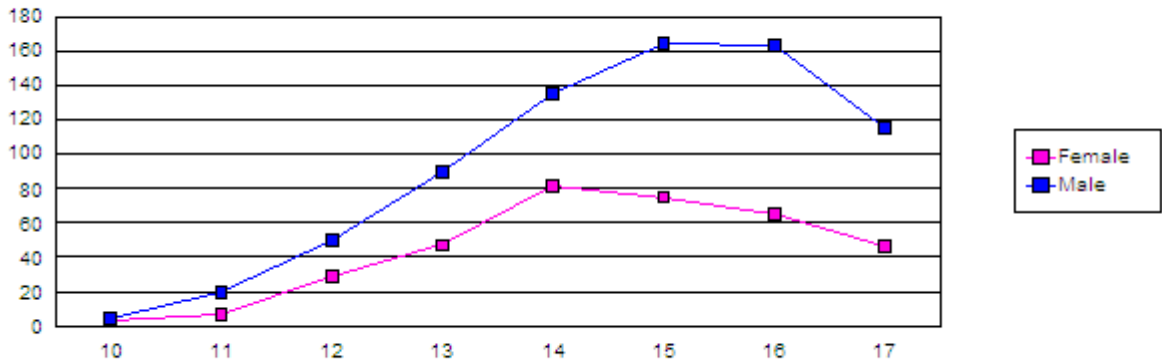
2012 - 2013 School Year

Cases received between 8/1/2012 and 7/31/2013

Age



Age by Gender



	Female	Male	Total
10	3	4	7
11	7	19	26
12	29	50	79
13	47	90	137
14	81	135	216
15	75	164	239
16	65	163	228
17	46	115	161
Total	353	740	1,093