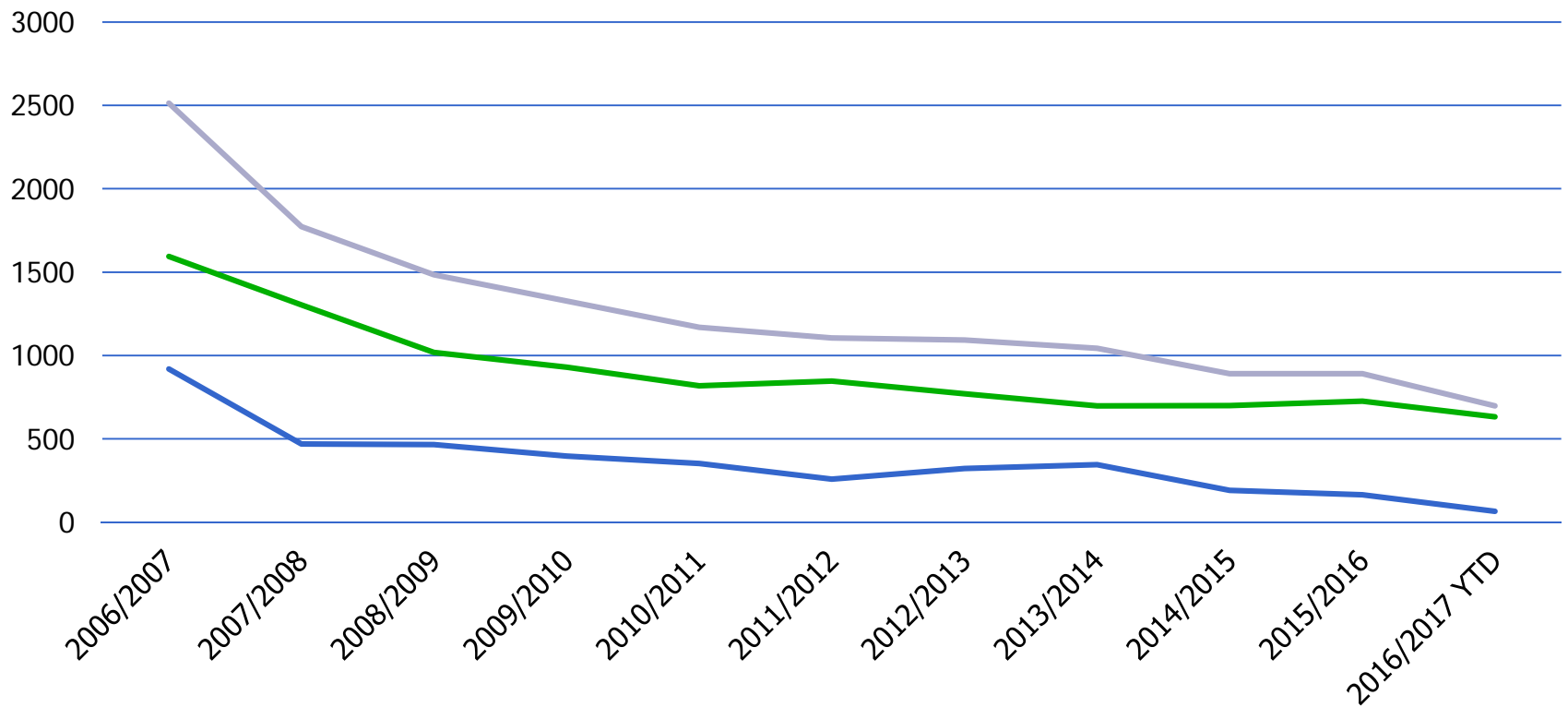


# Total School Crime Referrals to HCAO 2006/2007 to 2016/2017 School Years



— Minneapolis Public Schools

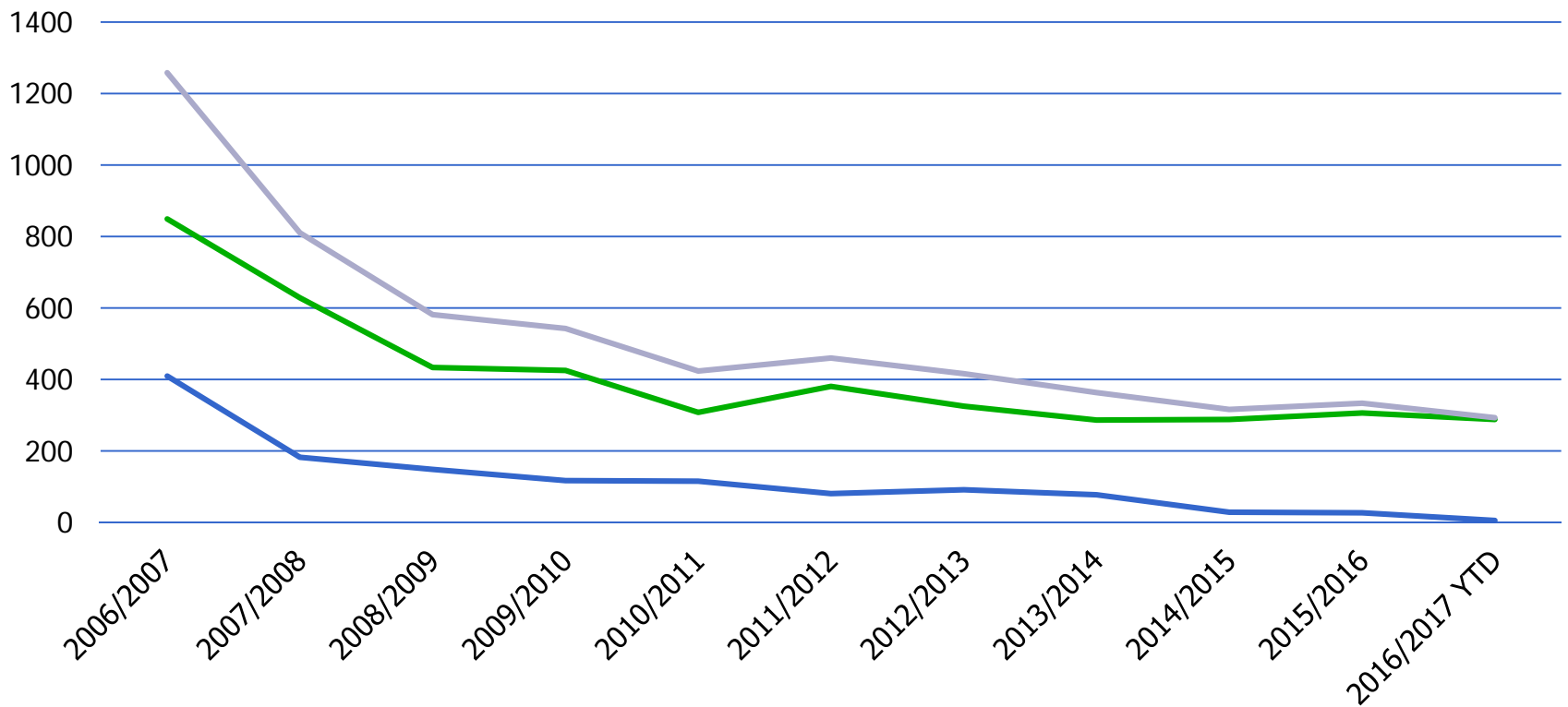
— Other Hennepin Schools

— Hennepin Total



# Total Disorderly Conduct School Crime Referrals to HCAO

## 2006/2007 to 2016/2017 School Years



— Minneapolis Public Schools

— Other Hennepin Schools

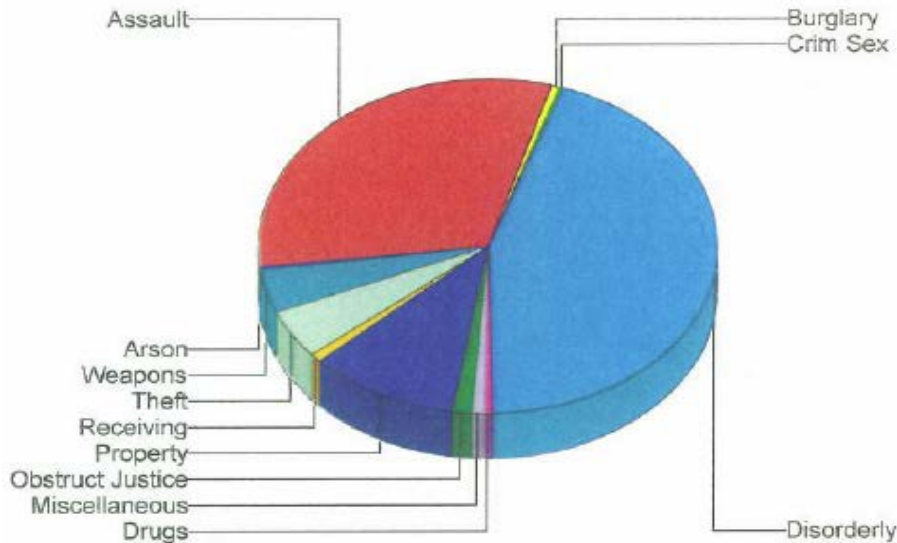
— Hennepin Total



# MPS School Crime Referrals

2006/2007 School Year

## Offense Type

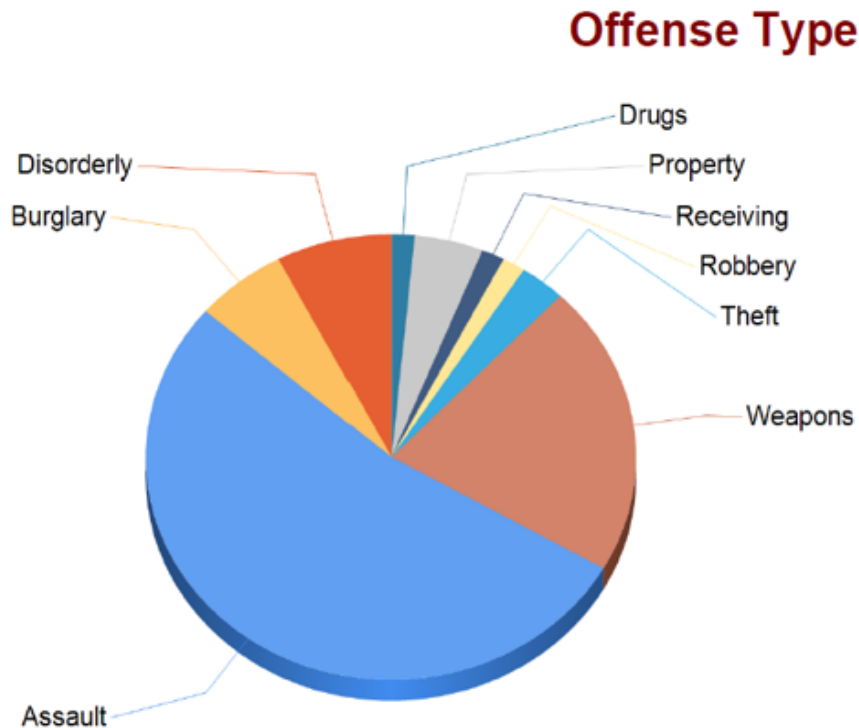


Arson	3	0.3%
Assault	289	31.4%
Burglary	5	0.5%
Crim Sex	2	0.2%
Disorderly	409	44.5%
Drugs	4	0.4%
Miscellaneous	9	1.0%
Obstruct Justice	12	1.3%
Property	96	10.4%
Receiving	9	1.0%
Theft	43	4.7%
Weapons	38	4.1%
Total:	919	100.0%



# MPS School Crime Referrals

8/1/2016 to 6/26/2017



Offense Type	# of Cases	% of Total
Assault	35	53.0%
Burglary	4	6.1%
Disorderly	5	7.6%
Drugs	1	1.5%
Property	3	4.5%
Receiving	1	1.5%
Robbery	1	1.5%
Theft	2	3.0%
Weapons	14	21.2%
<b>Total</b>	<b>66</b>	<b>100.0%</b>



# Outcome of School Crime Referrals from MPS

8/1/2016 to 6/26/2017

Prior History of Student	Charge	Diversion	Decline	Defer for Additional Investigation	Total
No Prior Referrals to HCAO	12*	14	2	2	30
Prior Referrals to HCAO for Offenses at School(s)	2	1			3
Prior Referrals to HCAO for Offenses in Community	9			1	10
Prior Referrals to HCAO for Offenses occurring in Community & at School(s)	18		4	1	23
Total	41	15	6	4	66

\* Includes 5 cases that were charged after unsuccessful diversion referral

